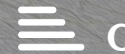


Payne
& Co.

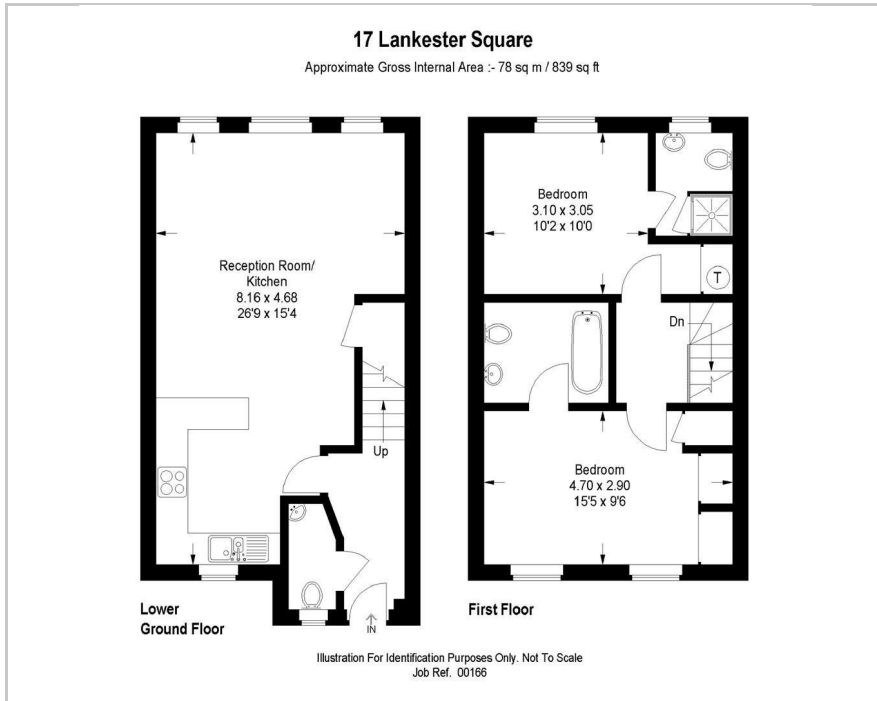


17 Lankester Square, Oxted, RH8 0LJ

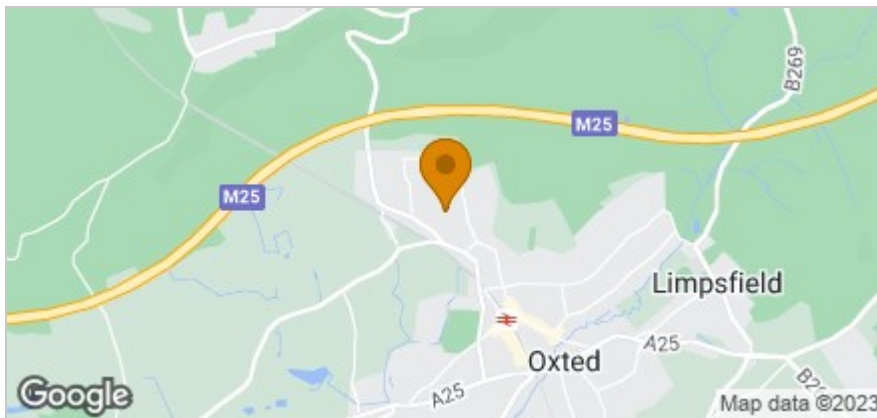
£1,800 Per Calendar Month



Floor Plan



Area Map



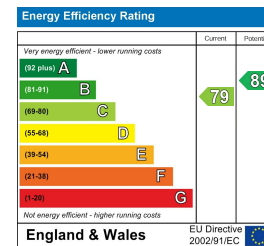
Accommodation

- 2 Bedrooms
- En-Suite Bathroom & Shower Room
- Entrance Hall
- Cloakroom
- Double Glazed & Central Heating
- Kitchen opening to Living Room
- Driveway Parking & Garage
- Good Size Rear Garden

Viewing

Please contact our Payne & Co. Office on 01883 712261 if you wish to arrange a viewing appointment for this property or require further information.

Energy Efficiency Graph



These particulars, whilst believed to be accurate are set out as a general outline only for guidance and do not constitute any part of an offer or contract. Intending purchasers should not rely on them as statements of representation of fact, but must satisfy themselves by inspection or otherwise as to their accuracy. No person in this firm's employment has the authority to make or give any representation or warranty in respect of the property.